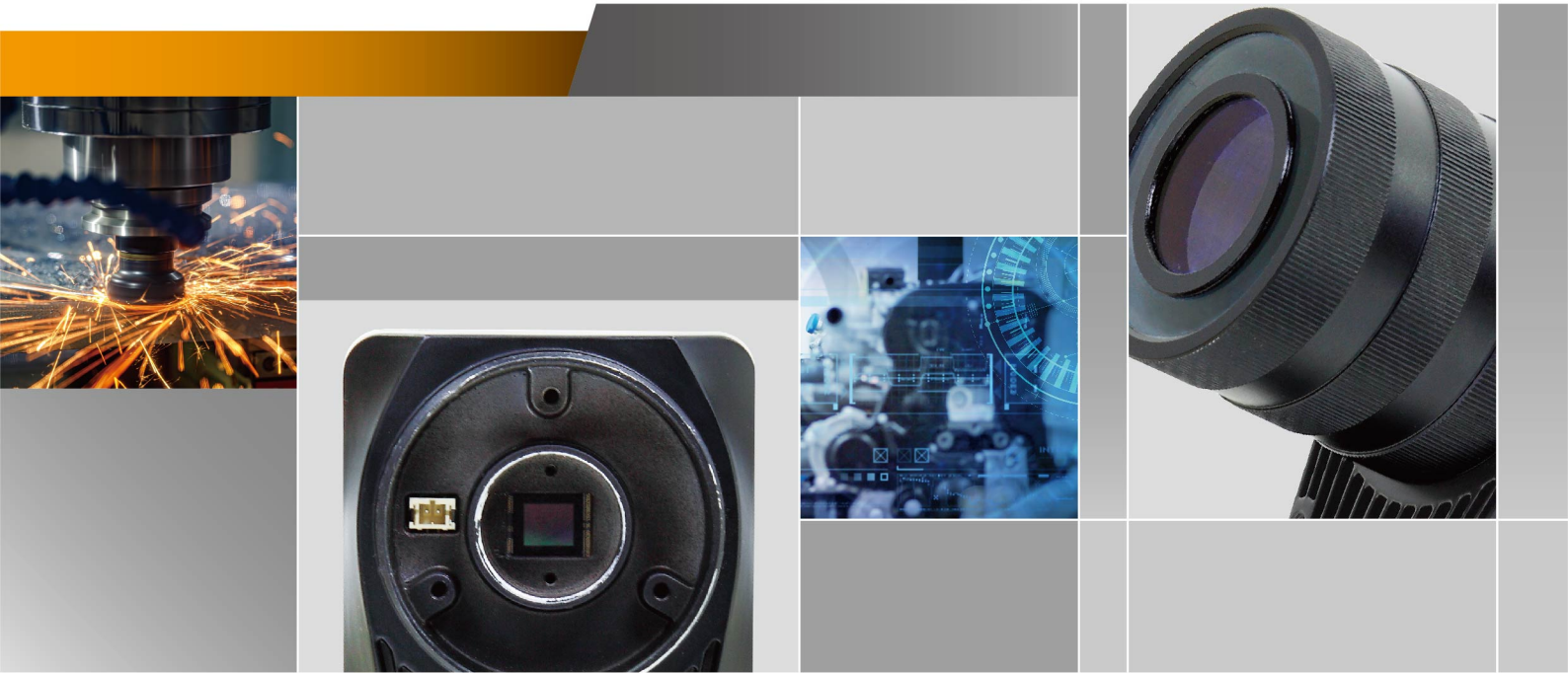


XispSmart-S Series
A New Generation Smart Camera
Based On The Xispvision® Inspection Platform



● Introduction

XispSmart, the new generation of Xispek Smart Camera is a highly integrated product. It not only has an arithmetic unit and photosensitive chip, but also an independent FPGA to conduct the tracking control function, which constructs a complete inspection system with the support of open software platform. XispSmart series have 5 different modes with different resolutions and applications. There is always one mode that meets your demand.

3-in-1 Breaking Through The Boundary Between A Smart Camera And A Embedded Machine Vision System



● The Maximized Integration Reduces Significantly The Total Cost

The Embedded Pwm Light Source Controller

XispSmart has an embedded lighting and controller for external lights.

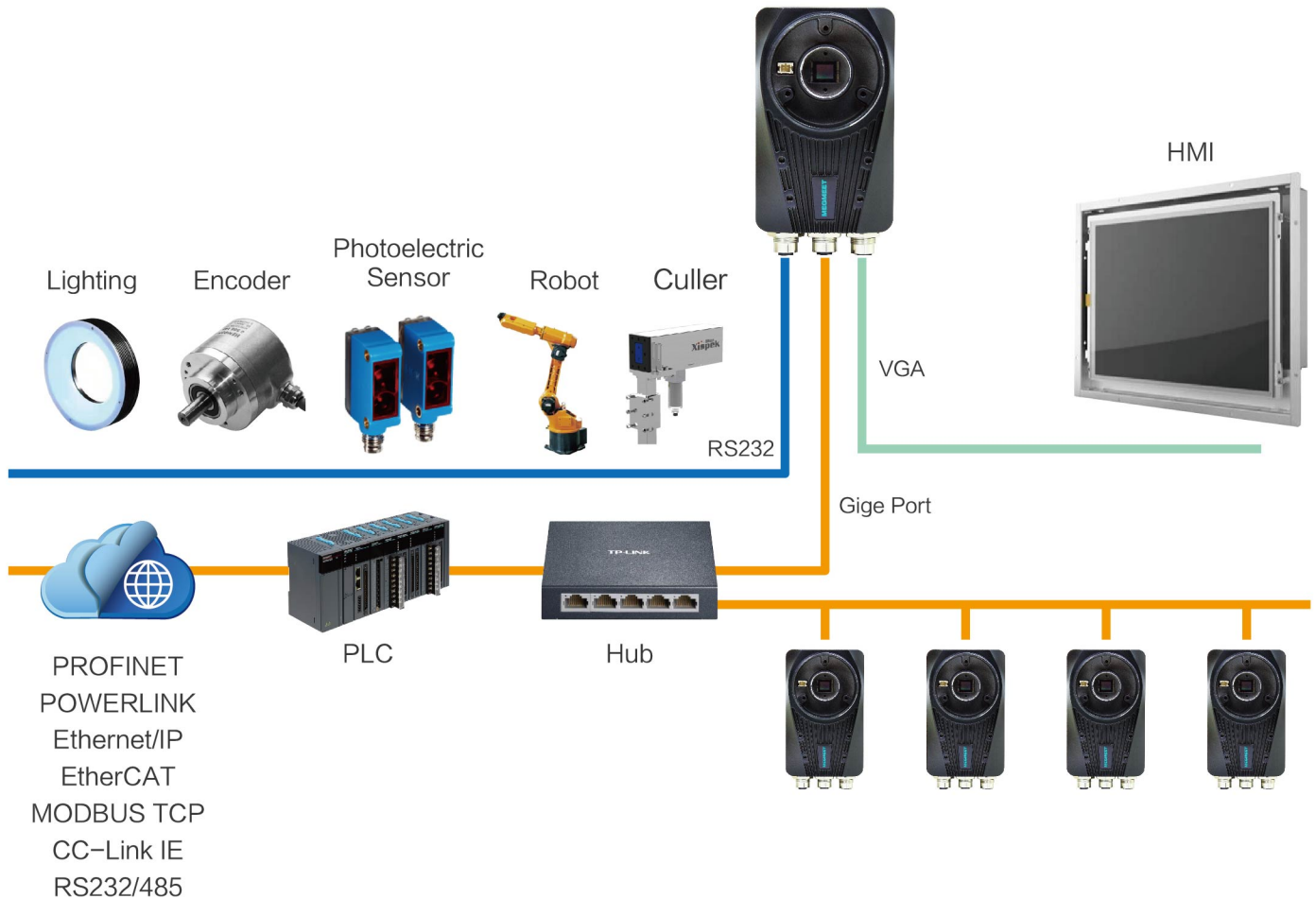


Compact Design And Dimension

The compact design makes it easier to be integrated into the production line.




The Multiple I/o And The Gige Interface Make It Possible To Connect Many External Devices



● A Fully Functional System Which Solves A Wide Range Of Visual Applications

The XispSmart series have achieved a major breakthrough in flexibility, performance and easy integration, which can perform inspection quickly and accurately. At the same time, the compact size can be easily installed on the production line with limited space.



The XispVision[®] inspection platform integrated a HMI, a software algorithm library and a tracking technology.

The embedded LED light source can optimize the imaging effect, besides, free of maintenances.

The C-mount lens can be replaced on site to ensure excellent resolution under a certain working distance.

The diverse interfaces are available for Input and Output sensors and devices.

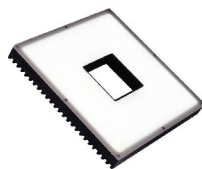
The new designed aluminum house reduces effectively the temperature of the camera and improve the stability of the equipment.

The IP65 protection level can offer protection under difficult factory conditions.

Diverse Accessory Options: Terminal, External Light Source, Lens, Etc.



HMI



External Lighting



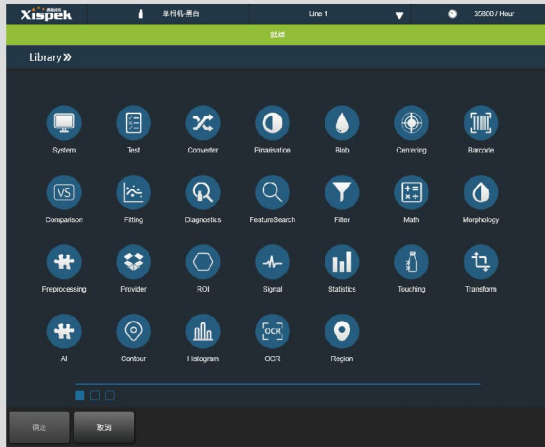
Medium Back Hole Light



The Powerful Xispvision[®] Has Been Deployed On Many Industrial Applications Successfully

XispSmart is based on the XispVision[®] platform, and provides many image and signal processing algorithms, with the help of inspection chain technology. XispSmart can be adapted for different applications quickly.

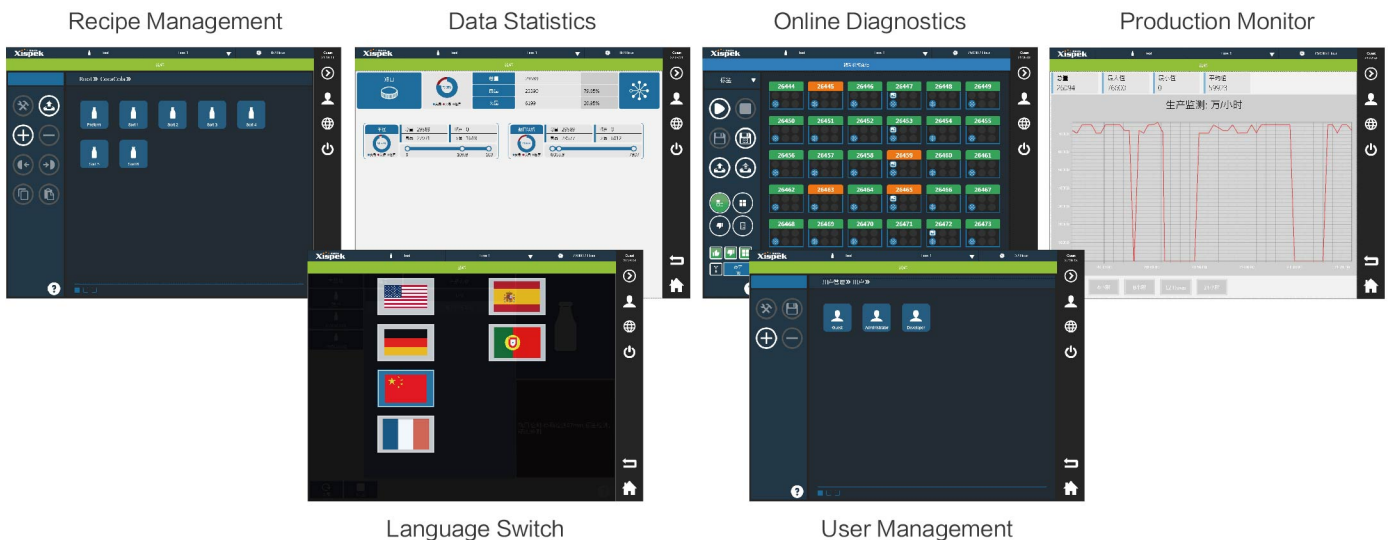
25 Sub Algorithm Library Which Includes Around 200 Algorithm



Flexible Inspection Chain



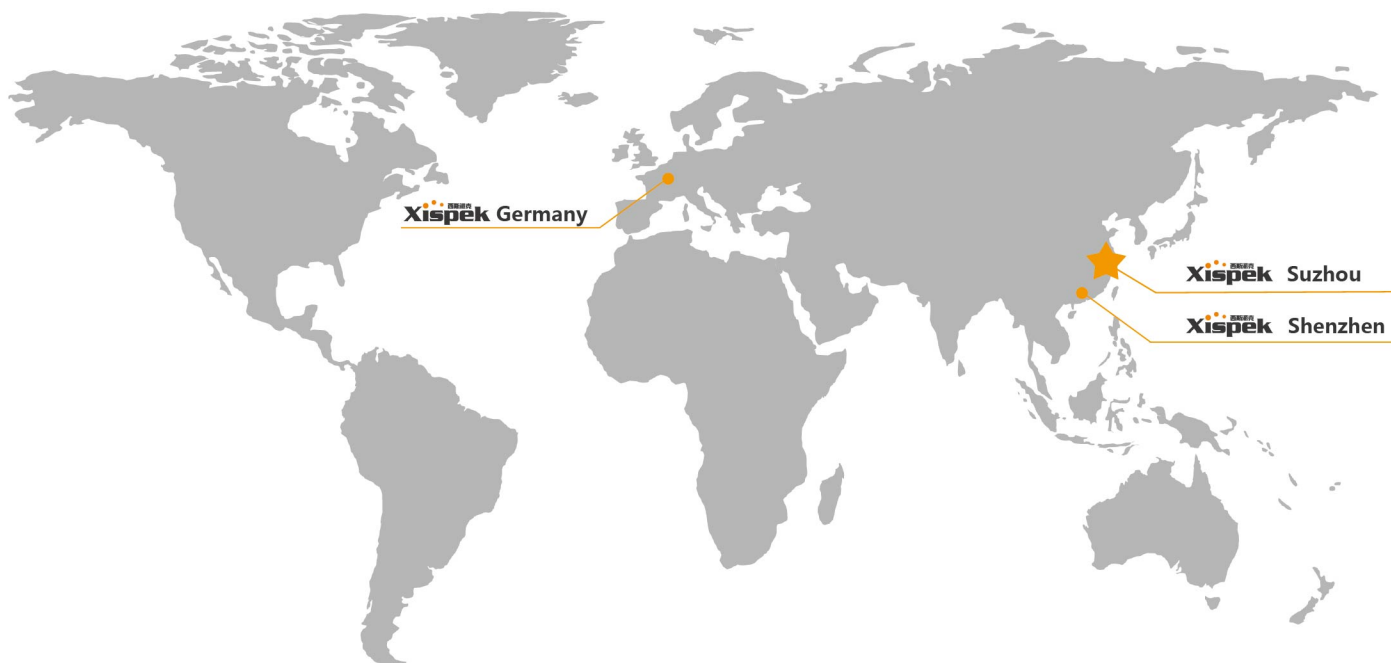
An Intuitive human machine interface allows not only the users to configure easily the visual applications, but also provides rich functions such as recipe management, data statistics, production monitor, online diagnostics and user management.



● Specification

Model Name	XispSmart-S-13M-90GMC	XispSmart-S-50M-20GMC	XispSmart-S-120M-30RM
Image processing Storage			
RAM	4GB		
eMMC	64GB		
Display			
VGA	VGA output max. 1920 x 1080@60Hz		
Sensor			
Image Sensor	PYTHON 1300	IMX264LLR	IMX226LQJ
Resoulution	1280 x 1024	2592 x 2048	4000 x 3000
Sensor Size	1/2"	2/3"	1/1.8"
Pixel Size (µm)	4.8 µm x 4.8 µm	3.45 µm x 3.45 µm	1.85 µm x 1.85 µm
Frame Rate (fps)	90fps	20fps	30fps
Shutter	Global	Global	Rolling
Format	Monochrome / Color		Monochrome
Pixel	130M	500M	500M
IO Interface			
Trigger Input	1x opto-isolated trigger input		
Digital Input	4 xopto-isolated input (max. 24VDC)		
Digital Output	4 xopto-isolated output (5V/12V/24VDC)		
PWM Lingting Control	1 xLingting Control output, max. 1A		
Serial Commuication	1 x RS232 (TX and RX only)		
Ethernet	1 x Gigabit Ethernet port		
USB2.0	1 x USB2.0		
Encoder	1 x A/B Encoder		
Mechanical			
Power	24V DC IN Max. 36W		
Dimensions	130mm*75mm*65mm		
lens mount	C mount		
Connectors	1 x M12 8-pin (female), 1xM12 17-pin (male), 1x M12 12-pin (male)		
Software	XispVision® inspection software		
Certiifiarion	IP65		
Operating temperature	-10°C~50°C		

NOTE: XispVision® inspection software is available on all models.



Suzhou HQ

Tel: +86-512-8686 7258

Manager Teng: 13912634335

Mailbox: info@xispek.com

Website: www.xispek.cn

Address: Room412/414,NW02,#99Jinji Lake Avenue,SIP,Suzhou

German company

ADD: Am Kohlenbrink 4,58300 Wetter(Ruhr),Germany

TEL: +49(0)23359711 492

Shenzhen office

ADD: Langshan Road, Nanshan District, Shenzhen

TEL: 18617137937
